

Features + Specifications

IP00-600020

Intended Use:

- Ceiling Recessed housing
- IC & AT rated

Construction:

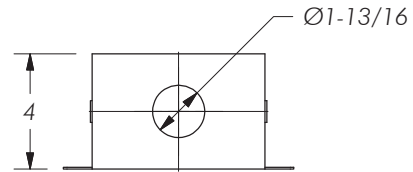
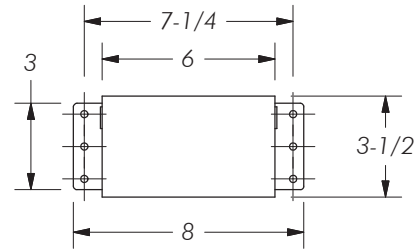
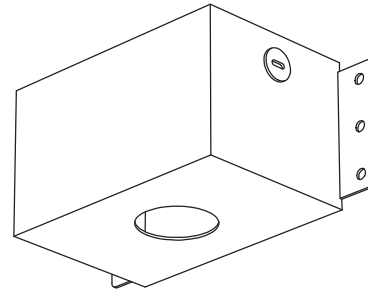
- Formed satin coated steel
- Joints are overlapped and spot welded

Electrical:

- Approved for thru branch circuit wiring

Installation:

- Unique versatile design, very easy to install
- Shallow height will fit 2 x 4 construction
- No hanger bars needed for installation



Product Code Information

IP00-600020

new construction housing

Project Name:		Fixture Type:	
QTY:	Product Code:		

Features + Specifications

IP00-600025

Intended Use:

- Ceiling Recessed housing
- IC & AT rated

Construction:

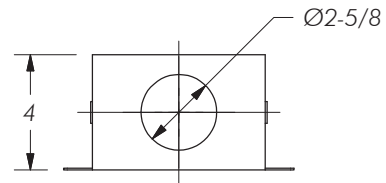
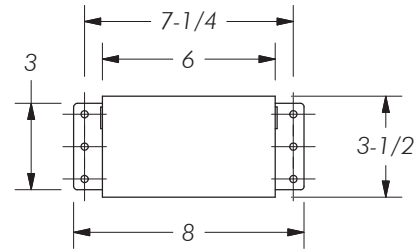
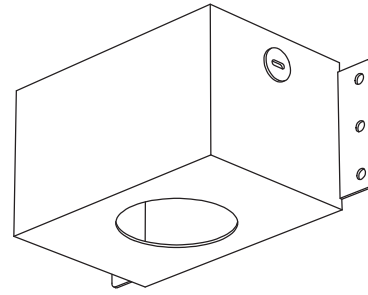
- Formed satin coated steel
- Joints are overlapped and spot welded

Electrical:

- Approved for thru branch circuit wiring

Installation:

- Unique versatile design, very easy to install
- Shallow height will fit 2 x 4 construction
- No hanger bars needed for installation



Product Code Information

IP00-600025

new construction housing

Project Name:		Fixture Type:	
QTY:	Product Code:		